

FOR RENT

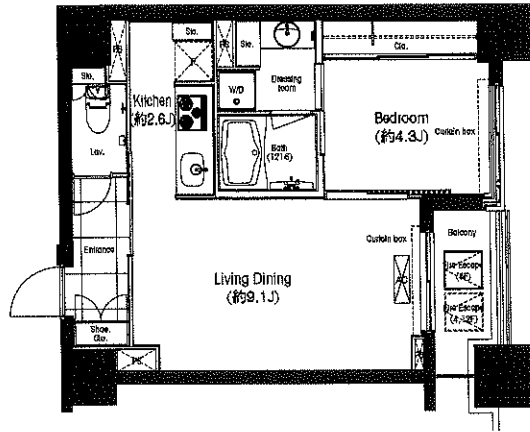
賃貸マンション

OZIO新川

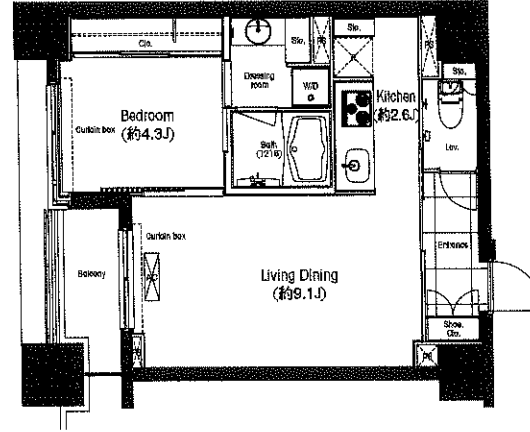
新築

都市型賃貸マンション

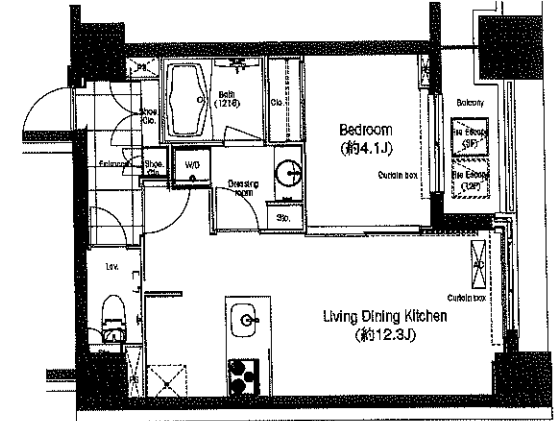
A type 1LDK [専有面積]41.05㎡(約12.4坪)



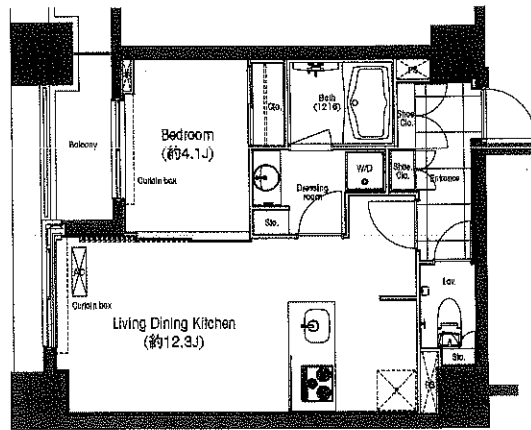
A type 1LDK [専有面積]41.05㎡(約12.4坪)



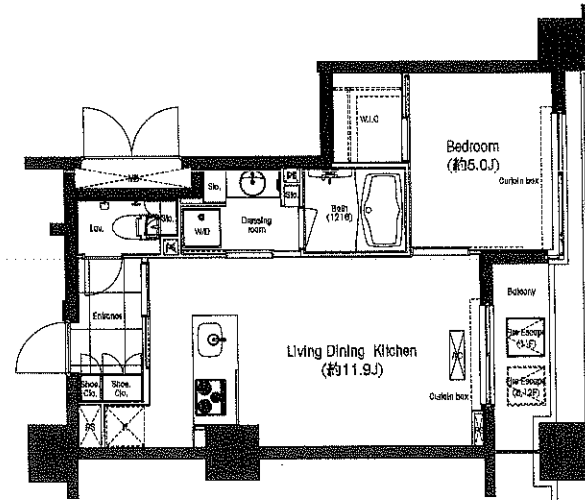
B type 1LDK [専有面積]41.05㎡(約12.4坪)



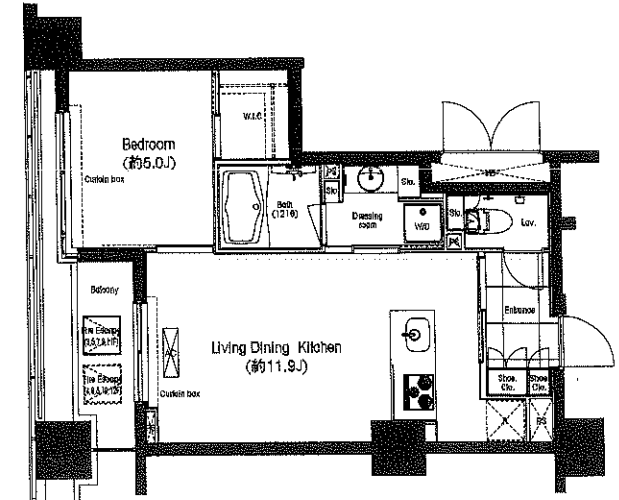
B type 1LDK [専有面積]41.05㎡(約12.4坪)



C type 1LDK [専有面積]41.05㎡(約12.4坪)



C type 1LDK [専有面積]41.05㎡(約12.4坪)



※間取り図等現況に相違がある場合は現況を優先と致します。

FOR RENT

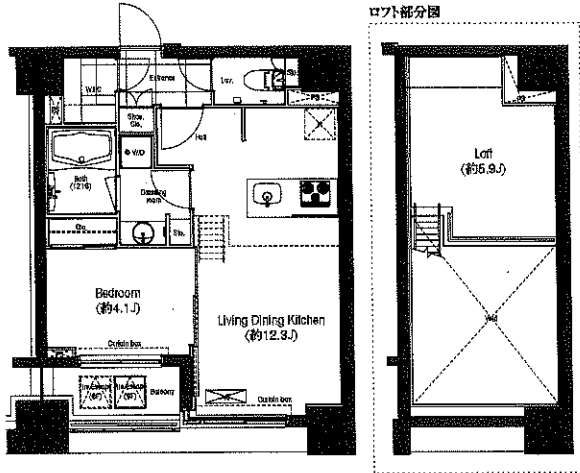
賃貸マンション

OZIO新川

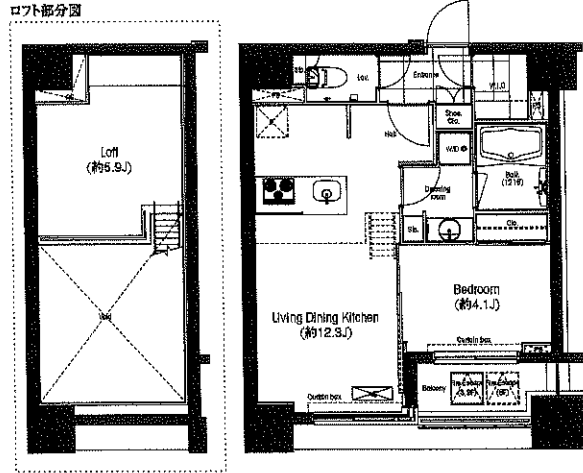
新築

都市型賃貸マンション

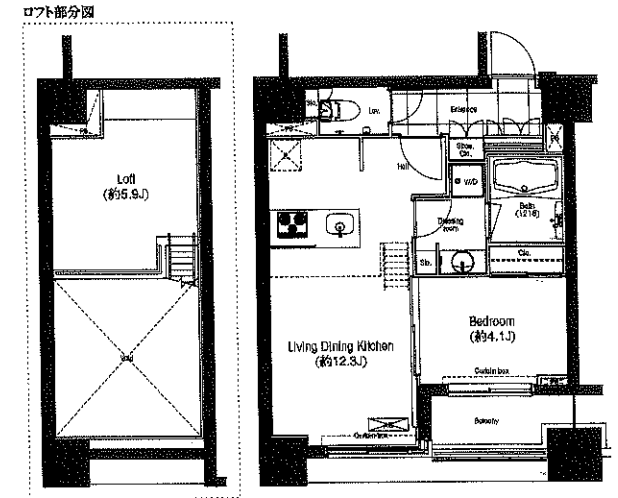
D Type 1LDK+Loft [専有面積]41.05㎡(約12.4坪)



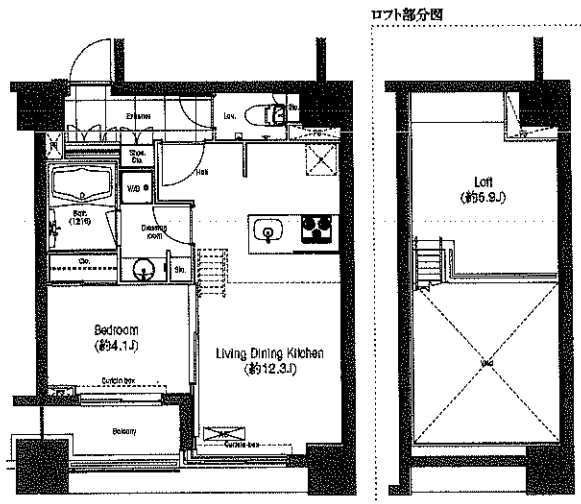
D' Type 1LDK+Loft [専有面積]41.05㎡(約12.4坪)



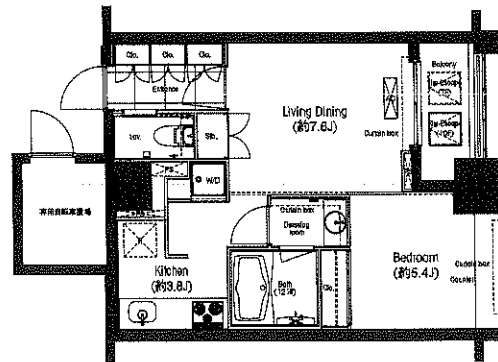
E Type 1LDK+Loft [専有面積]41.05㎡(約12.4坪)



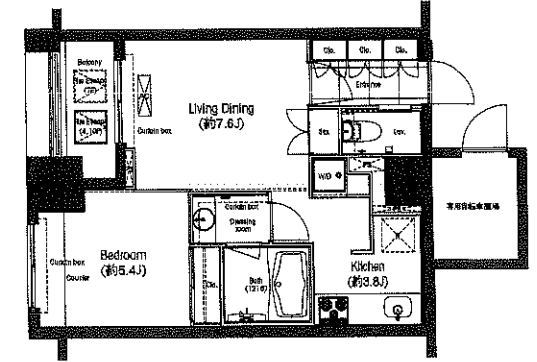
E' Type 1LDK+Loft [専有面積]41.05㎡(約12.4坪)



F Type 1LDK [専有面積]40.45㎡(約12.2坪)



F' Type 1LDK [専有面積]40.45㎡(約12.2坪)



FOR RENT

賃貸マンション

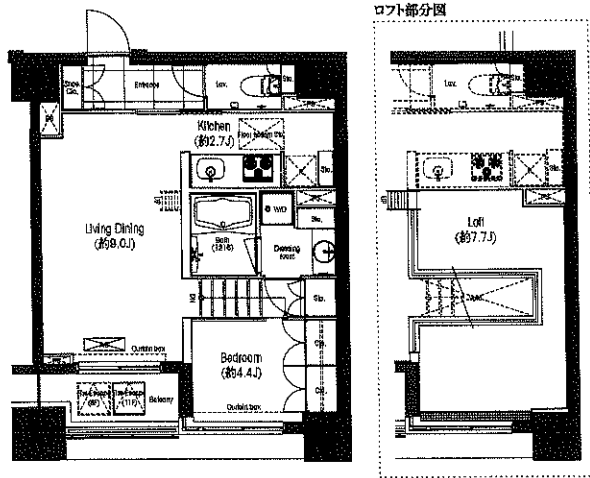
OZIO新川

新築

都市型賃貸マンション

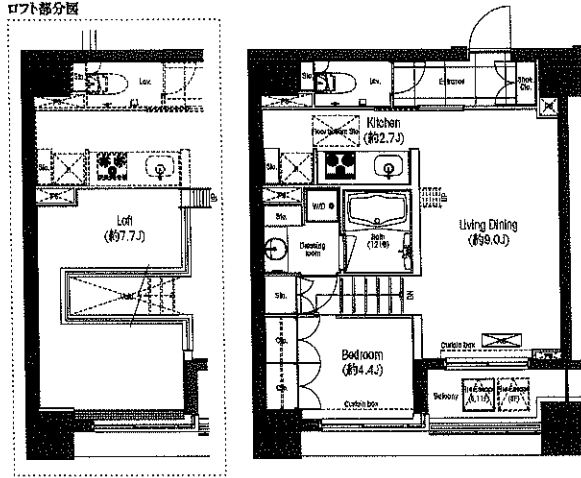
G
type

1LDK+Loft 専有面積41.05㎡(約12.4坪)



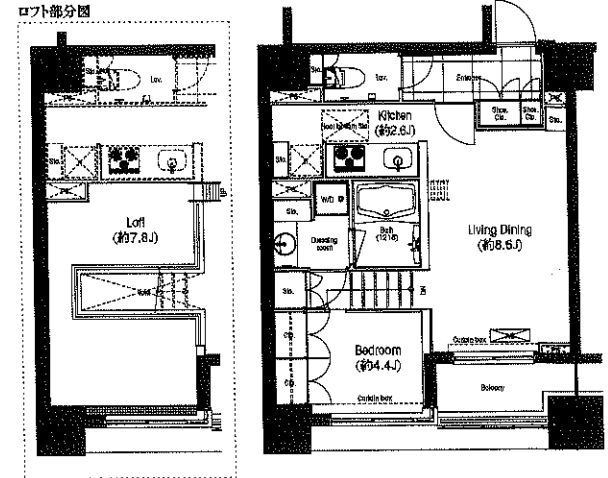
G
type

1LDK+Loft 専有面積41.05㎡(約12.4坪)



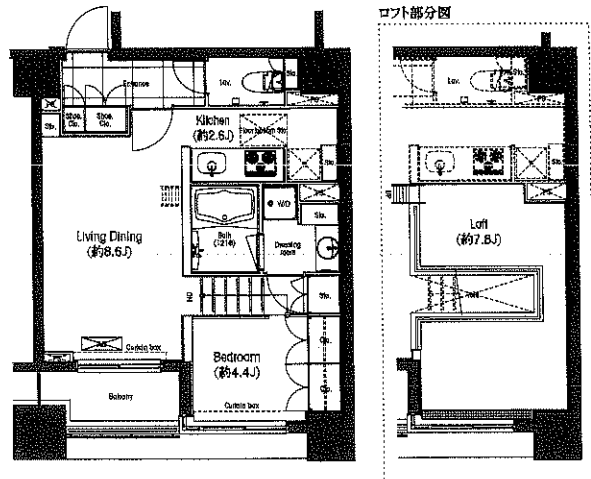
H
type

1LDK+Loft 専有面積41.05㎡(約12.4坪)



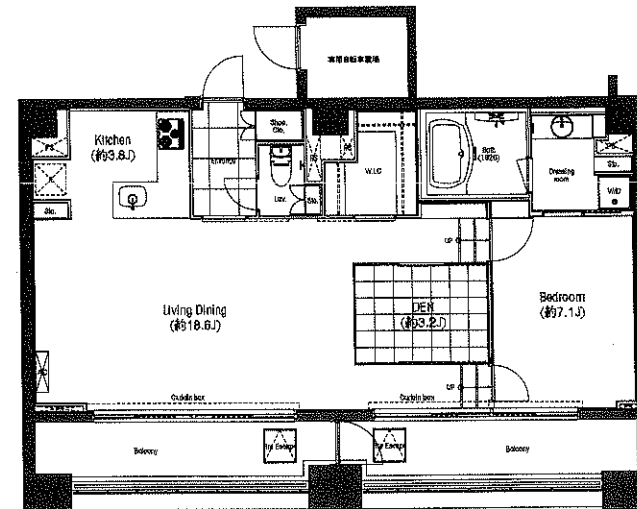
H
type

1LDK+Loft 専有面積41.05㎡(約12.4坪)



I
type

1LDK+DEN 専有面積74.42㎡(約22.5坪)



FOR RENT

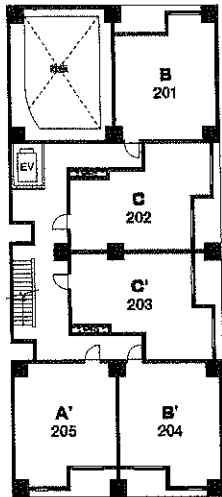
賃貸マンション

OZIO新川

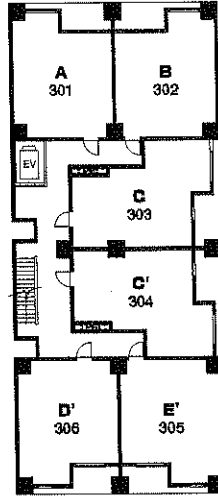
都市型賃貸マンション

新築

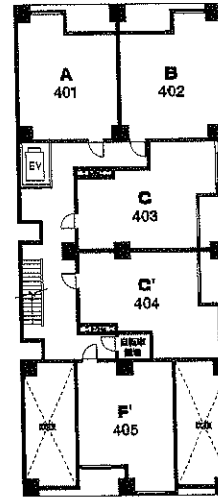
2F平面図



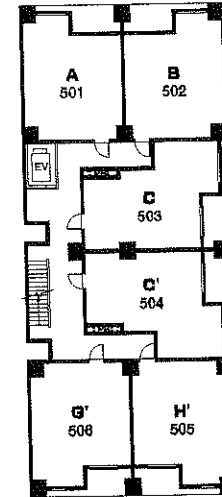
3F平面図



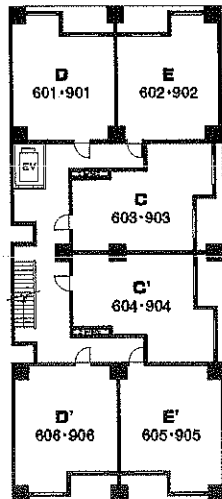
4F平面図



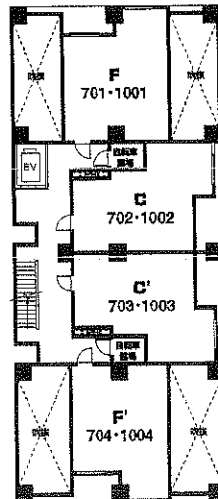
5F平面図



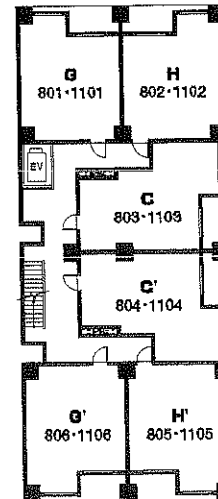
6・9F平面図



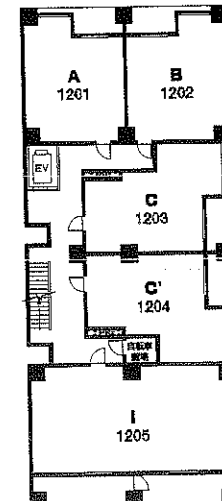
7・10F平面図



8・11F平面図



12F平面図



※間取り図は現況に相違がある場合は現況を優先と致します。